

EKL SERIES

Oil Sealed Rotary Vane Vacuum Pump

EKL - 60 & 80



Single Stage, Oil Re-circulating, Air Cooled, and Direct Driven

- Compact Design - Reliability & Durability
Easy to maintain and operate.
- Simple Installation - Air Cooled No Water Required.
- Direct Drive - C - Face Design requires no belts.
- Integral Exhaust Filter - Discharge Air 99.9% Oil Free.
- Quiet Operation.



Standard Equipment: Composite Vane, Wire mesh Inlet Filter Screen, Vibration Isolator, TEFC High Efficiency Motor, Anti-Suck Back Valve, Oil Level Sight Glass, Gas Ballast Valve (N & F Only), Spin-on Oil Filter.

Optional Equipment: Exhaust Pressure Gauge, Level Switch, and Heater.

• Specifications:

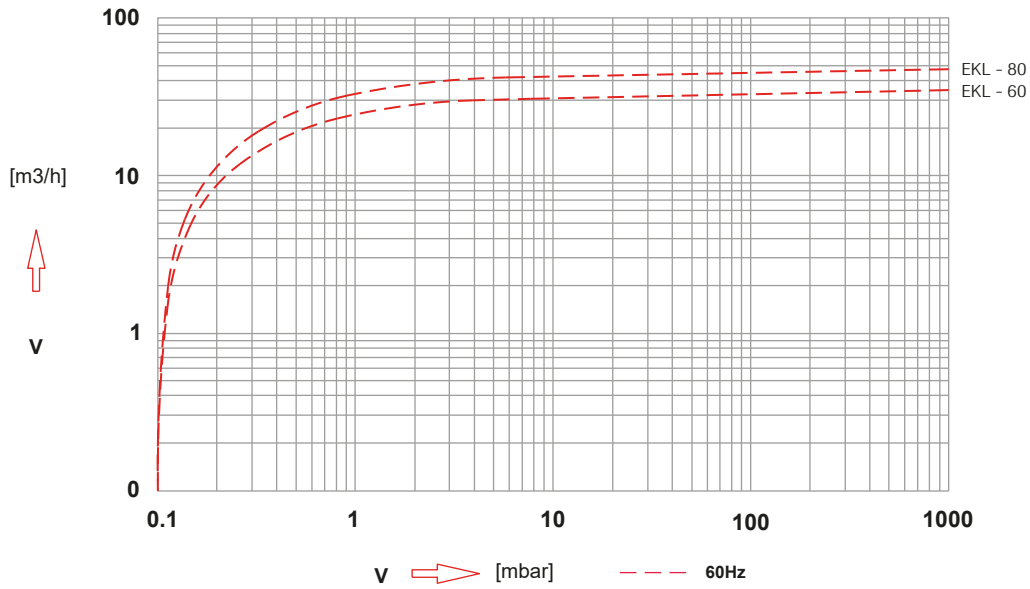
Models			60	80
Displacement	60Hz	m ³ /h	36	48
End Vacuum	F Type	mbar	0.1	0.1
Motor (3Ph)	IEC (Kw)	60Hz	1.1	1.5
	NEMA (Hp)		2	2
Motor(1Ph)	IEC (Kw)	60Hz	1.5	1.5
Revolution	RPM	60Hz	1740	1740
Noise	dB (A)	60Hz	67	67
Operating Temp.	°C		76	78
Oil Capacity	Ltr		1.4	1.4
Connections	G (BSP) or NPT	Intake	1-1/4"	1-1/4"
		Exhaust	1-1/4"	1-1/4"
Weight	kg (with motor)		47	53

EKL SERIES

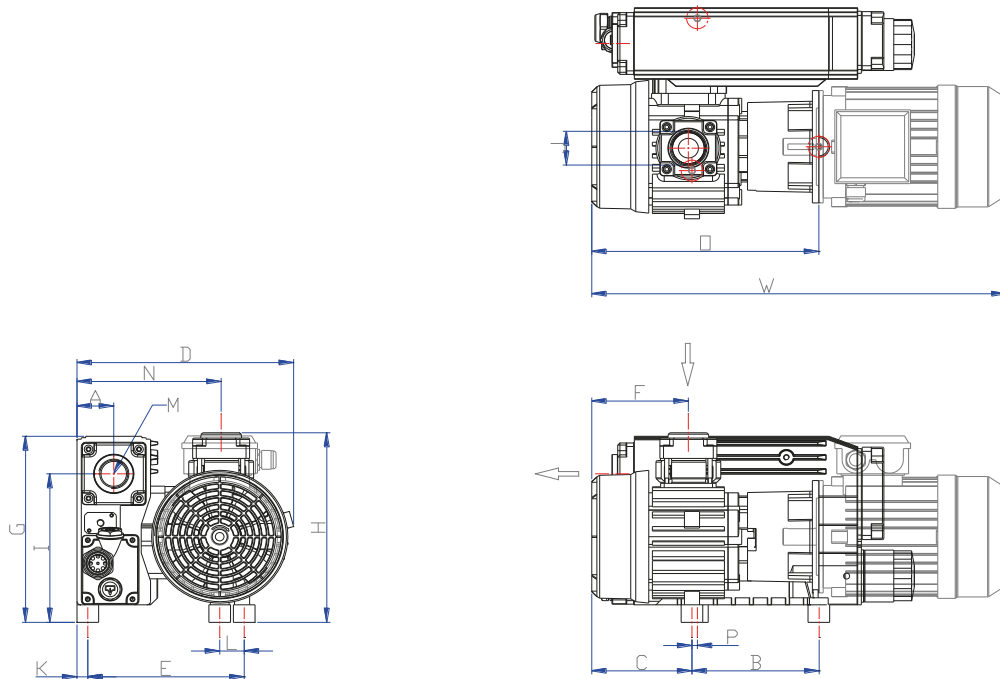
Oil Sealed Rotary Vane Vacuum Pump

EKL - 60 & 80

• Performance Curve



• Dimensions



DIMENSIONS	W	D	H	A	B	C	E	F	G	I	J	K	L	M	N	O	P	Q
EKL-60	575	301	270	50	176	139	217	134	265	212	G1-1/4"	15	34	G1-1/4"	200	315	7.5	3xM8
EKL-80	630 (605)				191	151		149								345		

* The dimensions in () are for 50Hz