

EKL SERIES

Oil Sealed Rotary Vane Vacuum Pump

EKL - 605



Single Stage, Oil Re-circulating, Air Cooled, and Direct Driven

- Compact Design - Reliability & Durability
Easy to maintain and operate.
- Simple Installation - Air Cooled No Water Required.
- Direct Drive - C - Face Design requires no belts.
- Integral Exhaust Filter - Discharge Air 99.9% Oil Free.
- Quiet Operation.



Standard Equipment: Composite Vane, Wire mesh Inlet Filter Screen, Vibration Isolator, TEFC High Efficiency Motor, Anti-Suck Back Valve, Oil Level Sight Glass, Built-in Float Valve Assembly for oil return.

Optional Equipment: Exhaust Pressure Gauge, Oil Level Switch (Port), Temperature Switch (Port), Heater and Water Cooler, Gas Ballast Valve, Spin on Oil Filter.

• Specifications:

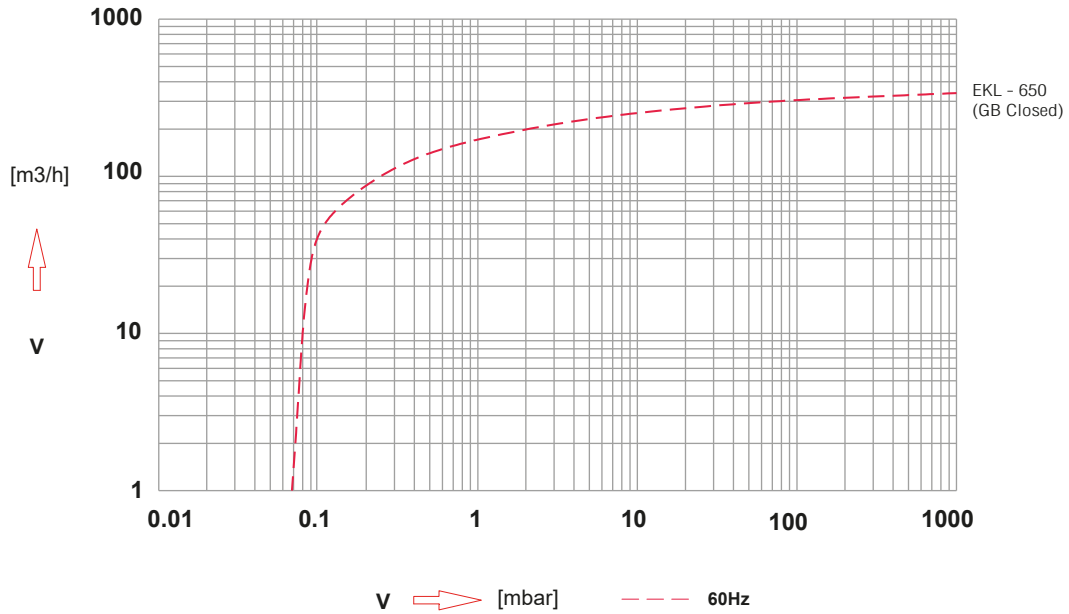
Models			650
Displacement	60Hz	m ³ /h	340
End Vacuum	GB Closed	mbar	0.1
	GB Open		0.1
Motor (3Ph)	IEC (Kw)	60Hz	7.5
	NEMA (Hp)		10
Revolution	RPM	60Hz	1740
Noise	dB (A)	60Hz	74
Operating Temp.	°C		80
Oil Capacity	Ltr		7
Connections	G (BSP) or NPT	Intake	2"
		Exhaust	2"
Weight	kg (with motor)		194 / 203

EKL SERIES

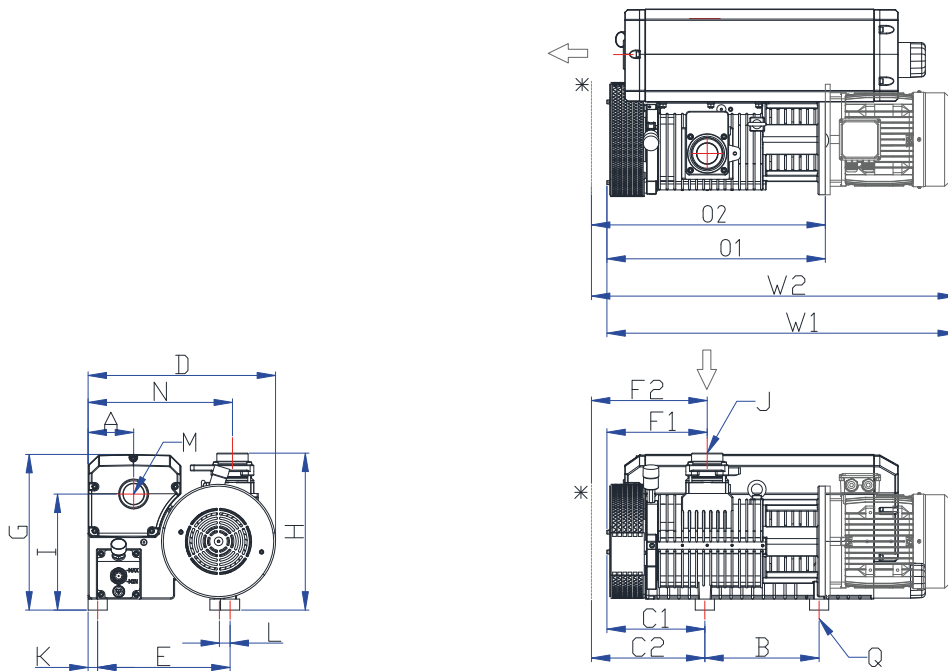
Oil Sealed Rotary Vane Vacuum Pump

EKL - 605

• Performance Curve



• Dimensions



DIMENSIONS	Hz	W1	W2	D	H	A	B	C1	C2	E	F1	F2	G	I	J	K	L	M	N	O1	O2	Q
EKL-605	60	988	1030	509	426	124	311	266	308	360	273	315	422	315	G 2"	26	29	G 2"	392	594	636	3xM10

* Large Size Cooler (Option)